



# GAT MONTHLY MEMBERSHIP PROGRESS REPORT

Results as of: 11/30/2021

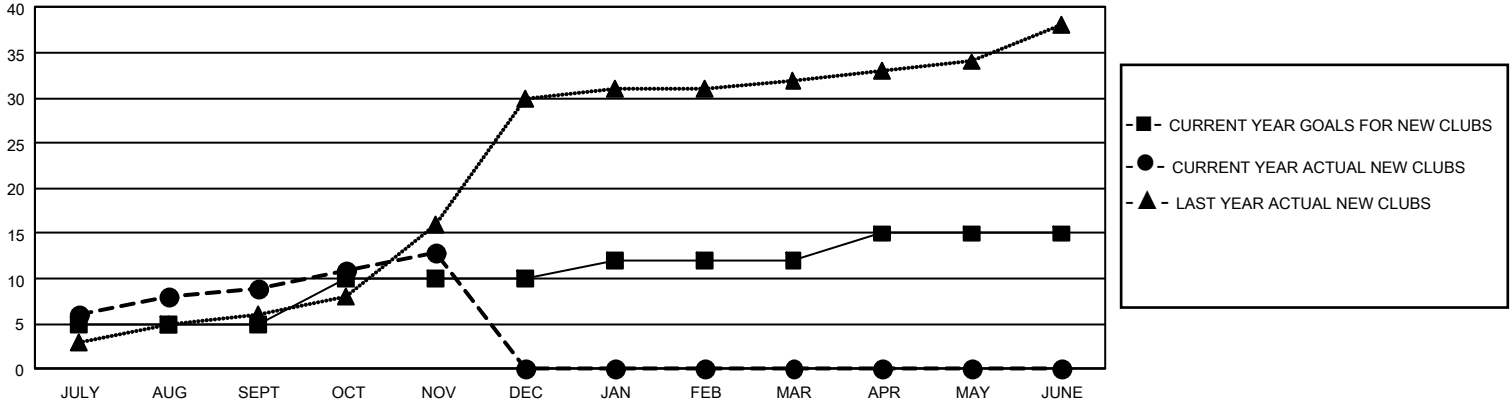
## GMT Constitutional Area 6, Group L

REPORT DOES NOT INCLUDE CLUBS IN UNDISTRICTED AREAS.

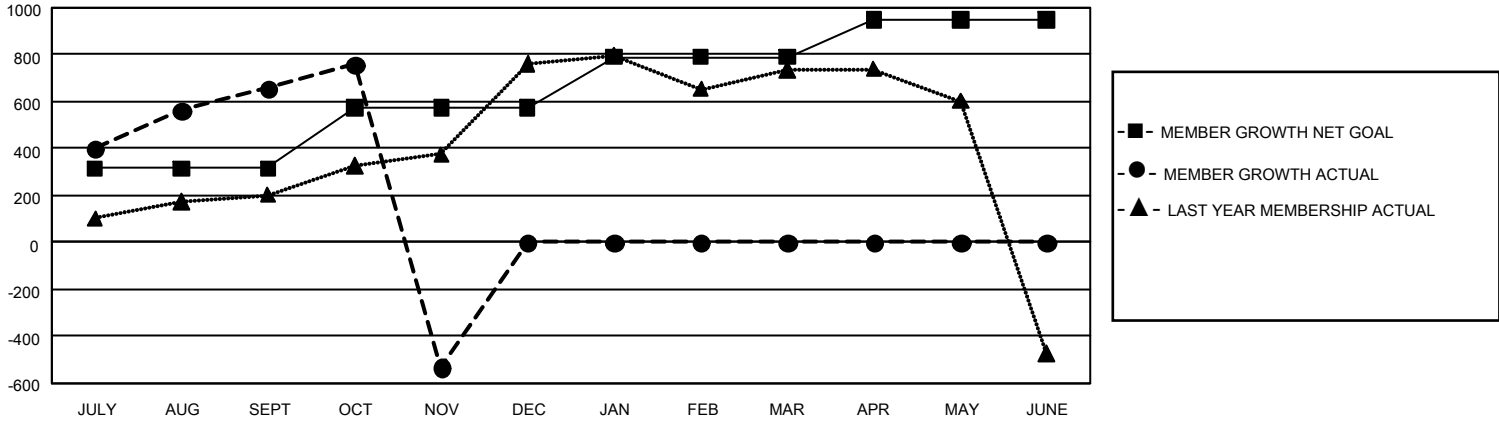
Clubs			
RESULTS FOR 2021-2022			
QUARTER	NEW CLUB GOAL	NEW CLUBS	DROPPED CLUBS
JULY/AUG/SEPT	15	9	4
OCT/NOV/DEC	15	4	2
JAN/FEB/MAR	6	0	0
APR/MAY/JUNE	9	0	0

Members			
RESULTS FOR 2021-2022			
QUARTER	MEMBER GROWTH NET GOAL	MEMBER GROWTH ACTUAL	DROPPED MEMBERS ACTUAL (including transfers)
JULY/AUG/SEPT	315	905	181
OCT/NOV/DEC	260	269	1,442
JAN/FEB/MAR	215	0	0
APR/MAY/JUNE	160	0	0

GOALS AND ACTUAL NEW CLUBS CUMULATIVE



GOALS AND ACTUAL MEMBERS CUMULATIVE



<b>DROPPED CLUBS: 6</b>	138 CLUBS OF 315 ADDED 1 OR MORE NEW MEMBERS	<u>GENDER DISTRIBUTION</u>	
<u>DROPPED MEMBERS</u>		MALE	6,671 (60.68%)
DECEASED	19	FEMALE	4,322 (39.32%)
CLUB CANCELLED	1,368	NON BINARY	0 (0.00%)
OTHER	236	PREFER NOT TO ANSWER	0 (0.00%)
<b>TOTAL</b>	<b>1,623</b>	TOTAL FAMILY UNIT MEMBERS	6,358
	<a href="#">CLICK HERE FOR CUMULATIVE MEMBERSHIP DATA</a>	FAMILY MEMBERS PAYING HALF DUES	3,461